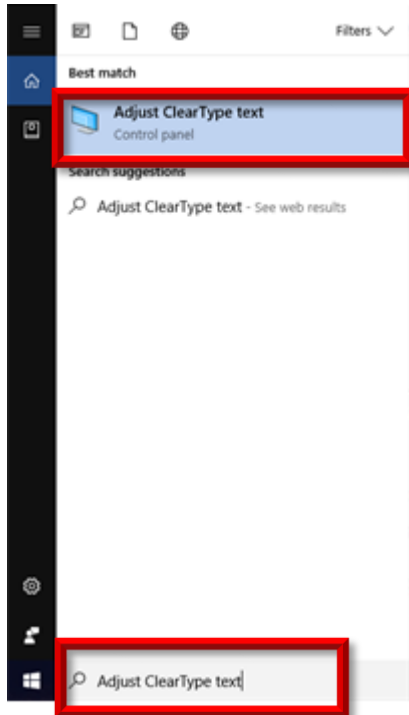


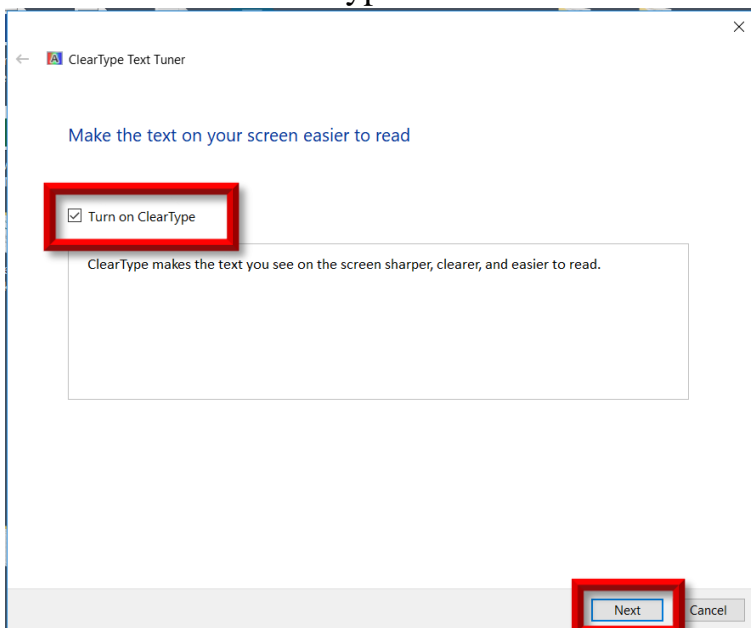
Adjust the Text on your Screen to Make it Clearer

To turn on ClearType

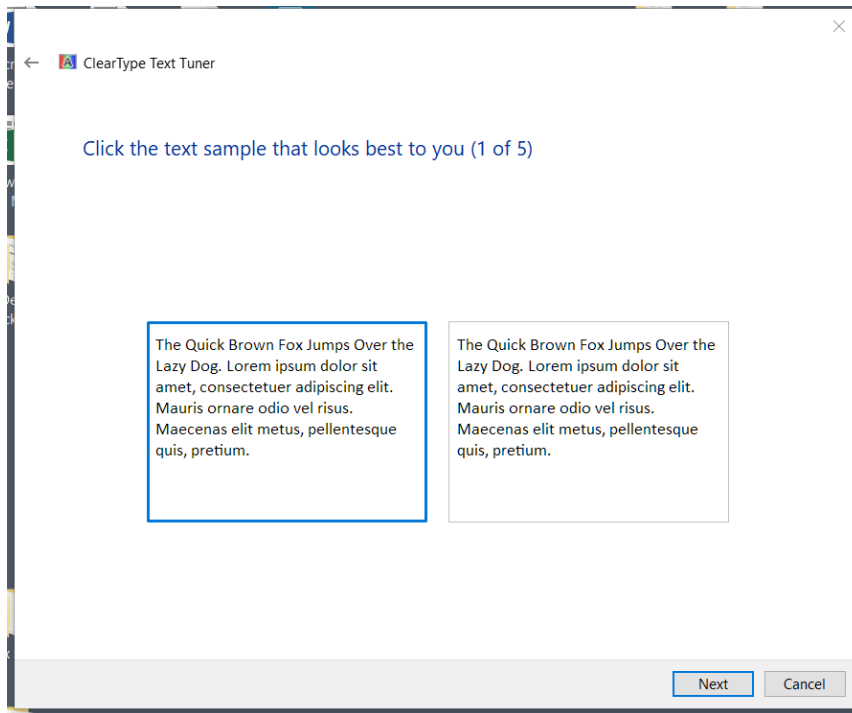
1. At the search box, type Adjust ClearType Text. At the top, click Adjust ClearType text.



2. Select “Turn on ClearType” check box. Click Next.



3. Go through the text samples and click the one that looks the best to you. Click Next.



4. On the last page of the tuner, click Finish to turn on ClearType. If you're prompted for an administrator password or confirmation, type the password or provide confirmation.